

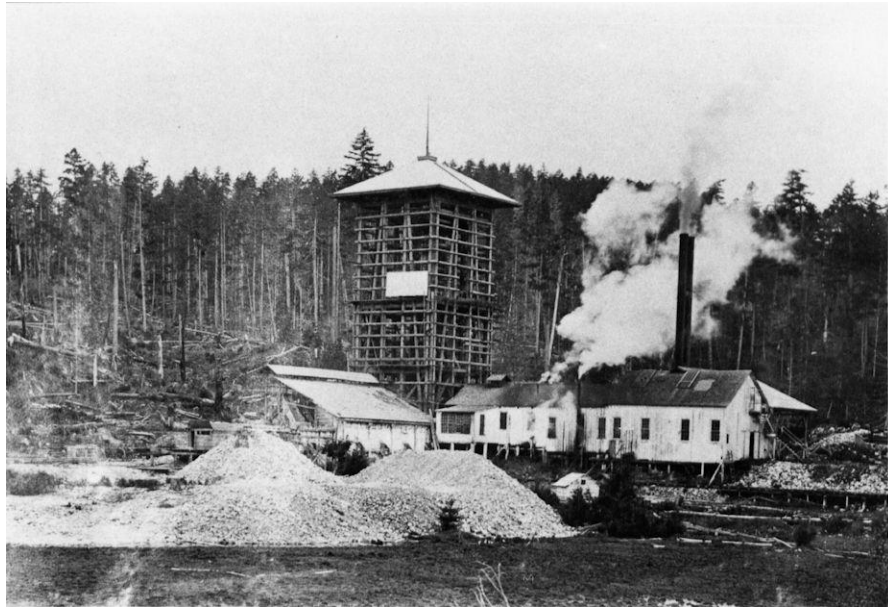
THE MARBLE BAY MINE

The richest gold, silver and copper mine on Texada was located in central Texada City, now Van Anda.

The origin of the Marble Bay Mine is linked to J.J. Palmer who came to Texada and was first interested in quarrying marble for building construction starting in 1878. He moved on to develop the Marble Bay Mine and by 1897 he had installed a steam boiler for power, a shaft house, hoists and pumps.

In 1901 Palmer reported to the Victoria Colonist newspaper that the Marble Bay Mine was sending 175 tons of high grade ore to Tacoma (for smelting) every five days. Grade two ore was being stored for concentration before being shipped south. A compressor and five air drills worked the mine (instead of the usual two man hand drills).

In 1902 Palmer had mined to the 260 foot level and the ore seemed to be giving out. He sold the Marble Bay Mine to the Tacoma Steel Company. The Tacoma Steel Company did exploratory work and found a large body of ore that reached down to the 760 foot level. Later exploration showed more rich ore below 760 feet.



The Tacoma Steel Company invested in new equipment for the mine: a 2,000 foot tramline to the ore bunkers in Sturt Bay, larger compressors and more drills, a new ten story head frame, an electric plant and larger pumps.

Its exact location of the Marble Bay Mine is known and can be visited at any time. Stand on home plate at the ball diamond in Van Anda and look north. In front of you is a small hill with bleacher seating. At the top of the hill is a poured concrete slab surrounded by chain link fence. The concrete slab covers the vertical shaft of the Marble Bay Mine.

8/17/2010 - P. Kenny